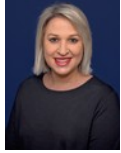




Bruce Campbell
083 226 2015
bruce@natalproperty.co.za



Jessica de la Hey
084 510 0808

jessica@natalproperty.co.za

Contact **Pietermaritzburg**

033 3451515

Property House
78 Commercial Road (78 Chief Albert Luthuli
Road)
Pietermaritzburg
3201

2 Bedroom Flat For Sale in Scottsville

NEW



SOLE MANDATE

Web Ref 6950691



R750,000

 2  1.5

Monthly Bond Repayment R7,614.22

Calculated over 20 years at 10.75% with no deposit.

Transfer Costs R25,898.00 **Bond Costs** R19,565.00

These calculations are only a guide. Please ask your conveyancer for exact calculations.

Monthly Levy R1,119 **Monthly Rates** R805

Spectacular Views

This delightful apartment in popular Nedbank Plaza offers panoramic views from the balcony.

The flat is tiled throughout and offers a lounge/diningroom, and a modern well fitted kitchen.

Two bedrooms with bics are served by a bathroom with a shower cubicle and a seperate toilet.

This block offers good security and the flat has a designated parking bay.

Call Bruce Campbell or Jessica De La Hey.

Features

Interior

Bedrooms	2
Bathrooms	1.5
Kitchens	1
Recep. Rooms	2

Exterior

Carports / Parkings	1
Security	No
Pool	No

Sizes

Floor Size	80m²
------------	------