



**NATAL
PROPERTY
CONSULTANTS**

THE AGENTS ON THE BALL



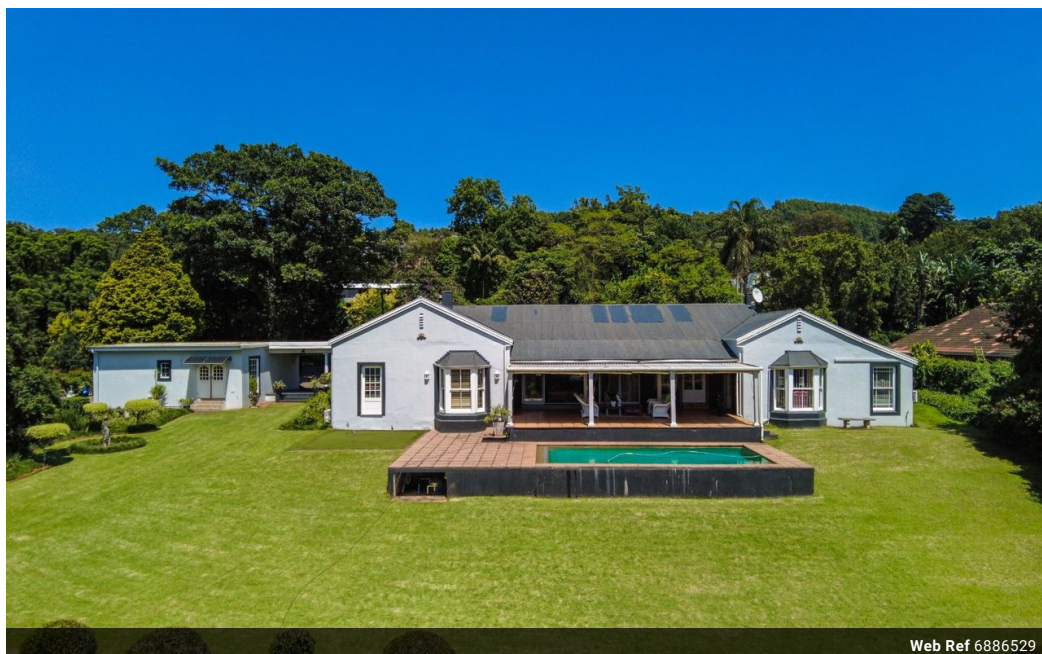
Bruce Campbell
083 226 2015
bruce@natalproperty.co.za

Contact Pietermaritzburg

033 3451515

Property House
78 Commercial Road (78 Chief Albert Luthuli
Road)
Pietermaritzburg
3201

4 Bedroom House For Sale in Wembley



Web Ref 6886529



R3,450,000

4 3 1

Monthly Bond Repayment R35,025.40

Calculated over 20 years at 10.75% with no deposit.

Transfer Costs R216,214.00 **Bond Costs** R47,840.00

These calculations are only a guide. Please ask your conveyancer for exact calculations.

Monthly Rates R4,100

CHARMING HERITAGE HOME WITH BREATHTAKING VIEWS IN WEMBLEY

Step into a world of timeless elegance with this magnificent character-filled home in the heart of Wembley. Over 100 years old, this grand residence showcases the beauty of a bygone era, featuring stunning Oregon pine floors, classic wooden windows, and a warm, inviting ambiance throughout.

Boasting four bedrooms and three bathrooms, this home offers ample space for family living. A study provides the perfect work-from-home space, while two lounges and a formal dining room create an inviting atmosphere for relaxation and entertaining. The well-appointed kitchen, complete with a separate scullery, makes daily living a breeze.

Outside, the beautiful garden provides a private sanctuary, offering spectacular views over the city. A sparkling swimming pool is the centerpiece of this stunning outdoor space, complemented by a...

Features

Interior

Bedrooms	4
Bathrooms	3
Kitchens	1
Recep. Rooms	5
Studies	1

Exterior

Garages	1
Security	Yes
Dom. Accom.	1
Pool	No

Sizes

Land Size	369m ²
-----------	-------------------